



```
290 <U1 0 >
291 <U1 0 >
292 <U1 0 >
293 <U1 0 >
294 <U1 0 >
295 <U1 0 >
296 <U1 0 >
297 <U1 0 >
298 <U1 0 >
299 <U1 0 >
300 <U1 0 >
301 >
302 <A "LoadportCarrier_CSM_IDWaitingForHost_To_IDVerificationOk" >
303 >
304 >
305 >
306 >
307 01 03 81 04 00 00 00 43 81 04 00 00 05 96 01 01 01 02 81 04 00 00 67 01 08 41 03 4C 50 31 A5 01 01 41 0C 46 31 43 45 53 30 30 31 38 37 35 30 A5 01 00
308 -----
309 30/04/2020 11:00:43:992
310 S3,F18 Received. Direction: H <- E
311 <L2
312 <U1 0 >
313 <L0
314 >
315 01 02 A5 01 00 01 00
316 -----
317 30/04/2020 11:00:43:986
318 S3,F17 Sent. Direction: H -> E
319 <L5
320 <U1 1 >
321 <A "ProceedWithCarrier" >
322 <A "FIC50018750" >
323 <U1 1 >
324 <L3
325 <L2
326 <A "CAPACITY" >
327 <U1 25 >
328 >
329 <L2
330 <A "SUBSTRATECOUNT" >
331 <U1 25 >
332 >
333 <L2
334 <A "USAGE" >
335 <A "PRODUCT" >
336 >
337 >
338 >
```

QuESTConnect suite consists of QuESTConnect200 and QuESTConnect300

QuESTConnect200 is a 200mm software package for integrating semiconductor equipment to factory host, while QuESTConnect300 empowers equipment suppliers to enable 300mm SECS/GEM standards-compliant interfaces, with the minimum amount of time and cost.

QuESTConnect



QuESTConnect200 200mm Host Connectivity solution

- Fully GEM Compliant. Verified with CCS Envoy test plans
- Modular design, highly scalable and easily customizable
- Supports both formatted and unformatted process program
- Deployed in FABs world wide
- Pluggable GEM Screens for equipment status, operator control, process program transfer, terminal services and variable data
- Simple configuration for variable , alarms and event. Intuitive configuration tool (QuESTConnect Configurator) minimizes configuration time. Also supports APIs for programmatic configuration
- Supports Multiple host connections
- In-process and out of process deployment to suit client application requirements
- Available as a stand-alone package or as a pre-integrated option with QuEST's tool control software
- E5 component can also be used separately without GEM(E30 component)
- Diagnostic file logging with run-time configurable error levels for troubleshooting purposes
- In-built SECS-II message logging in SML format

SEMI Standards

- E4 (SECS-I)
- E5 (SECS-II)
- E37 (HSMS)
- E30 (GEM)

Fundamental Requirements

- State Models
- Equipment Processing States
- Host-initiated S1F13/F14
- Event Notification
- On-line Identification
- Error Messages
- Documentation
- Control(Operator-

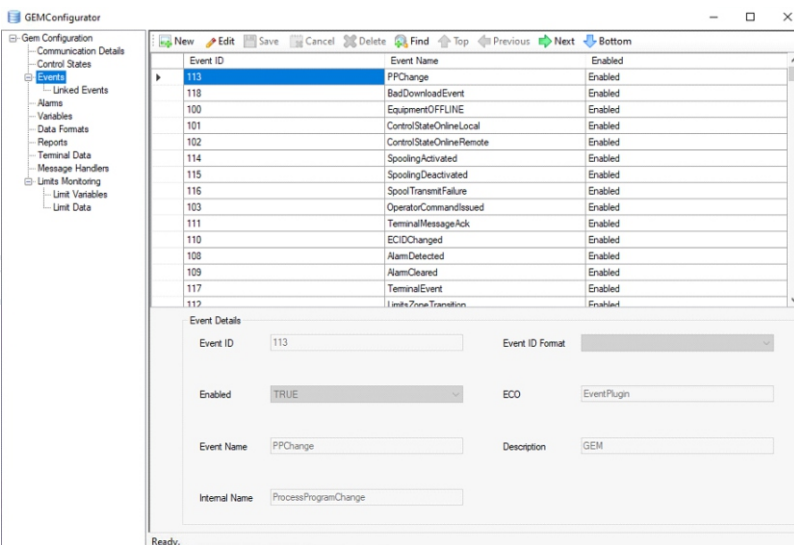
Additional Capabilities

- Spooling
- Clock
- Terminal Service
- Material Movement
- Process Program Management
- Equipment Constants
- Remote Control
- Alarm Management
- Status Data Collection
- Limits Monitoring
- Trace Data Collection
- Variable Data Collection
- Report Configuration
- Establish Communications
- Control(Host-Initiated

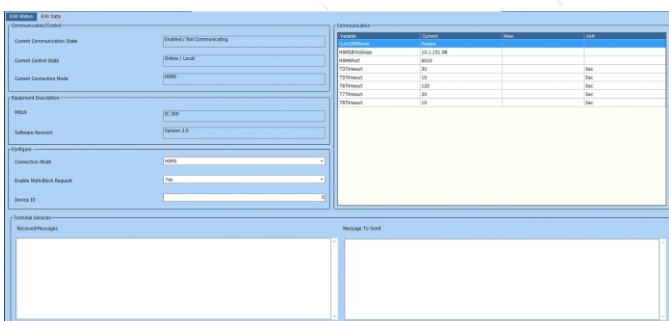


- Support for GEM custom messages. Provision for even custom processing of GEM specific messages
- Exhaustive SDK includes API specification, SECS-GEM manual, Installation & User guide, test application (with source code) etc.
- Support both C++ and C# interface for client integration
- Flexibility in design to add new SEMI standards that may evolve in future.
- Proven excellent service and support capabilities
- Global presence
- Support for FAB integration and acceptance
- One year free of cost product support comes along with development license
- Exhaustive SDK includes API specification, SECS-GEM manual, Free host simulation software QuEST Host comes along development

QuESTConnect Configurator GUI



Communication & Control Configuration





QuESTConnect300

300mm Host Connectivity solution

- Comprehensive and robust solution for 300mm host connectivity
- Includes all 200mm and 300mm SEMI standards
- Developed on top of QuESTConnect 200mm and includes all features of QuESTConnect 200
- Fully SEMI compliant
- Quantity is Built In-Fully Tested and validated in-house using test plan of CCS Envoy
- Comes along with full suite of test plan sessions of CCS Envoy for each SEMI standards, which is a stamp of compliance with SEMI standards
- Modular design, highly scalable and easily customizable. Architecture enables easy customization for any factory specific customizations.
- Simple configuration for variables, alarms and events. Intuitive configuration tool (QuESTConnect Configurator) minimize configuration time and saves good amount of set up time. Also supports APIs for programmatic configuration. Uses the same configuration as QuESTConnect
- Available as a stand-alone package or as a pre-integrated option with QuESTConnect tool control software
- Diagnostic file logging with run-time configurable error levels for trouble shooting purpose
- In-built SECS-II message logging in SML format
- Exhaustive SDK includes API specification, SECS-GEM manual template, installation & User guide, test applications etc.
- Ease of integration by providing both C++ and C# interfaces
- We protect you from the rapidly changing standards with releases addressing changes in SEMI standards. QuEST is a contributing member of SEMI and is at pace with changes in standards.
- QuESTConnect implementation supporting the following capabilities
- Completely developed in C#.Net – modular and modern

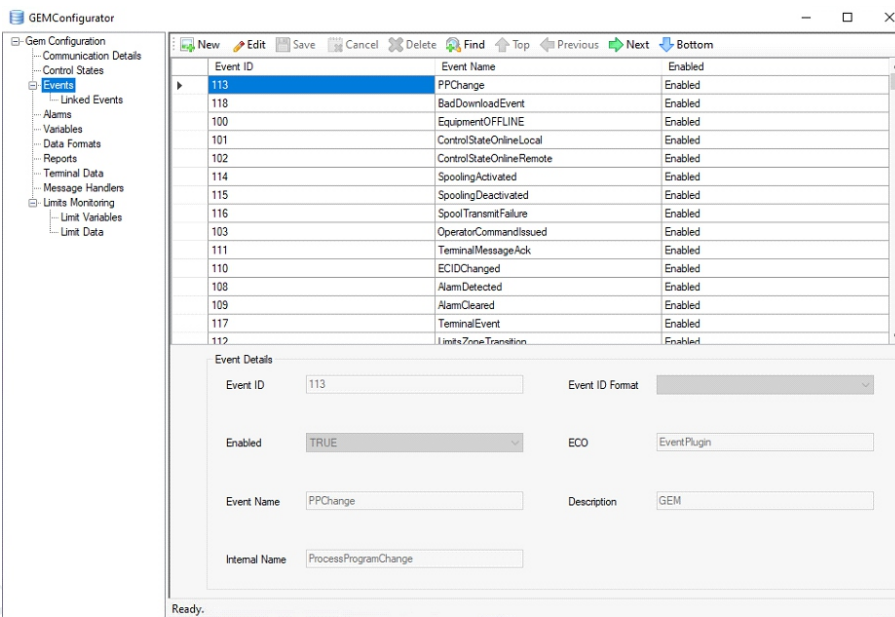
SEMI Standards

- E4 (SECS-I)
- E5 (SECS-II)
- E37 (HSMS)
- E30 (GEM)
- E39 (Object Services)
- E40 (Process job management)
- E94 (Control job management)
- E87 (Carrier management)
- E90 (Substrate tracking)
- E116 (Equipment Performance Tracking)



- Proven excellent service and support capabilities
- Support for FAB integration and acceptance
- One year free of cost product support comes along with development license
- Free host simulation software QuEST host comes along with development licence. All 300mm host scenarios are pre-configured with the host simulator
- Sample application for equipment simulator
- We also offer integration services

QuESTConnect Configurator GUI



Talk to Us Today

To learn how QuEST Global's transformative engineering solutions can help you succeed, contact salesenquiries@quest-global.com or visit us at quest-global.com

For more than 20 years, QuEST Global has been a trusted global product engineering and lifecycle services partner to many of the worlds' most recognized companies in Aero Engines, Hi-Tech, Aerospace & Defense, Transportation (Automotive and Rail), Power and Industrial, Oil & Gas and Medical Devices industries. With global presence in 14 countries, 65 global delivery centers and 12,000+ personnel, we are at the forefront of the convergence of mechanical, electronics, software and digital engineering innovations to engineer solutions for a safer and cleaner world. QuEST's deep domain knowledge and digital expertise aim at helping customers accelerate product development and innovation cycles, create alternate revenue streams, enhance consumer experience and make manufacturing processes & operations more efficient.

